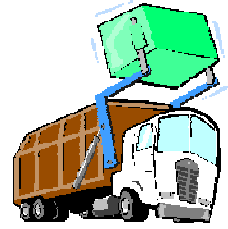




# TRASH TALK from ALLIED WASTE SERVICES

## Answers to Questions About Your Residential Trash Collection Washington Township



### WELCOME

Let us take this moment to thank you for your business! In order to serve you better, we have prepared a list of guidelines for your disposal needs. Please take a moment to review our procedures. By doing so you will know what to expect from our staff each week as we service your home.

### CUSTOMER SERVICE

Customer Service Reps are available to assist you Monday through Friday 8:00 am - 5:00 pm. Call us toll free:

☎ phone: 1-800-858-0089

### COST FOR SERVICE

\$37.89 a Quarter for Trash and Yard Waste  
\$30.00 additional per year for Recycling Service

### YOUR SERVICE INCLUDES

Household trash and yard waste. Please do not put loose trash in trash containers. Limit all containers and bags to no more than 55 lbs. 95 gallon containers provided by Allied Waste, or purchased from a previous service provider, are acceptable as long as the cart was designed to be emptied utilizing a hydraulic lifting system.

### PICK UP SCHEDULE

Please have your trash at curbside no later than 7:00 am. We are closed on the following holidays: New Years Day, Memorial Day, Fourth of July, Labor Day, Thanksgiving Day and Christmas Day. Since we are closed on these holidays, collection is rescheduled one day later than regular service for each day in the week following the holiday.

### RESTRICTIONS

The following items are not allowed in our vehicles. Please be sure they are not included in your weekly trash.

- o Liquid paint, pesticides, gasoline, oil
- o Gas cans, disposable LP gas tanks
- o Cement, rocks, bricks, stones
- o Syringes, infectious hospital waste
- o Liquid solvents & glue
- o Car batteries, tires, automotive parts

### SPECIAL PICK UPS

Large items are handled through Customer Service. Please call us at least 1 day prior to your pickup day to arrange removal of appliances, bulky items, furniture, and carpet.

### MISSED PICKUPS

If you feel your stop was missed, please contact Customer Service. If it was an error on our part, we would be happy to send a truck back to your home.

### YARD WASTE PROCEDURES

Michigan law requires that yard waste be disposed of at approved compost facilities rather than in landfills. Yard waste includes grass clippings, leaves, garden debris, small branches/shrubbery less than 4' in length and no larger than 2" in diameter (must be bundled and tied). Yard waste will be accepted in brown paper yard waste bags or in loose in trash cans up to 35 gallon clearly marked "Yard Waste". 95 gallon containers provided by Allied Waste, or purchased from a previous service provider, are acceptable as long as the cart was designed to be emptied utilizing a hydraulic lifting system.

We do not accept the following:

- ⊗ Straw, hay, apples
- ⊗ Logs, tree stumps, dirt, rocks, sod
- ⊗ Yard waste in plastic bags

Scheduled Yard Waste pickups are from April 1<sup>st</sup> thru Mid December.

### OPTIONAL RECYCLING PROGRAM

Allied Waste Services appreciates your concern for the preservation of the environment. In response, we have developed a curbside recycling program to reduce the amount of materials that enter landfills. Recyclable products include:

- ✓ Cardboard boxes - flattened, 2'x2' cut and tied
- ✓ Magazines, newspapers, paper bags, paperboard, telephone books, junk mail, office paper
- ✓ Household plastics #1 through #7
- ✓ Plastic grocery bags, dry cleaning bags
- ✓ Glass bottles and jars - clear, brown, green, blue
- ✓ Steel, tin & aluminum cans

### ABOUT YOUR BILL

Billing is quarterly for regular trash and yard waste pickup, plus the recycling option if requested. We accept payments by check, money order or credit card. Please mail your payment to the address printed on your invoice. Please allow 7-10 days for payment to process.

### DUMPSTER RENTALS

Allied Waste Services has a wide variety of dumpster sizes for commercial, industrial or for your larger residential clean-ups or construction needs. Please call Customer Service for details.