

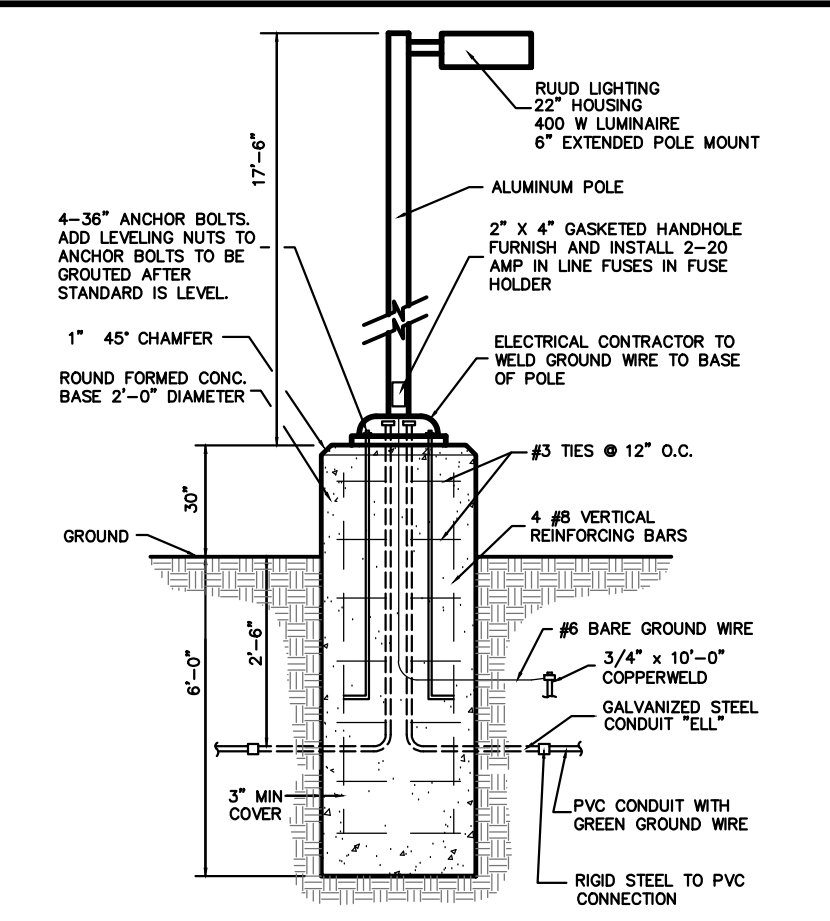
**WOODSIDE BIBLE CHURCH**

Quantity Summary

ITEM	QUANTITY
1 6" PVC SCH. 40 ROOF LEAD	209 L.F.
2 8" PVC SCH. 26	211 L.F.
3 12" C-76 CL. 4	301 L.F.
4 15" C-76 CL. 4	101 L.F.
5 2" DIA. INLET	2 EA.
6 2" DIA. MANHOLE	1 EA.
7 4" DIA. CATCH BASIN	4 EA.
8 4" DIA. MANHOLE	1 EA.
9 36" CMP STANDPIPE	1 EA.
10 TUTTLE LANDSCAPE DRAIN	1 EA.
11 24" CONC. END SECTION W/ RIP RAP	1 EA.
12 12" CONC. END SECTION W/ RIP RAP	1 EA.
13 OVERFLOW SPILLWAY	1 EA.
14 SWALE	30 L.F.
15 DOWNSPOUT CONNECTION	7 EA.

ITEM	QUANTITY
1 4" PVC SCH. 40 SEWER PIPE	209 L.F.
2 CLEANOUT	2 EA.
3 COMPACTED SAND BACKFILL	120 L.F.

ITEM	QUANTITY
1 ASPHALT PAVEMENT	7,288 S.Y.
2 CONC. CURB & GUTTER	1,795 L.F.
3 CAMPGROUND ROAD ASPHALT PATHWAY	770 S.Y.
4 DETECTABLE WARNING MAT, BRICK RED (5' WIDE)	8 EA.
5 SEALCOAT EXISTING ASPHALT, 2 COATS	6,444 S.Y.
6 4" WIDE WHITE STRIPING, 2 COATS	4,926 L.F.
7 THICKENED EDGE CONC. WALK	290 S.F.
8 8" CONC. DUMPSTER PAD	198 EA.
9 4" CONC. WALK	980 S.F.
10 PAINTED BF SYMBOL	6 EA.
11 BARRIER FREE SIGN AND POST	1 EA.
12 STOP SIGN AND POST	2 EA.
13 CROSS WALK STRIPING 12" WIDE, WHITE (2 COATS)	40 L.F.



**VERTICAL FORWARD THROW LIGHT DETAIL**

**LEGEND**

EXISTING	PROPOSED	DESCRIPTION
[Symbol]	[Symbol]	PAVEMENT (ASPHALT)
[Symbol]	[Symbol]	SIDE WALK (CONCRETE)
[Symbol]	[Symbol]	CONCRETE CURB AND GUTTER
[Symbol]	[Symbol]	STORM SEWER
[Symbol]	[Symbol]	SANITARY SEWER
[Symbol]	[Symbol]	WATER MAIN
[Symbol]	[Symbol]	MANHOLE
[Symbol]	[Symbol]	CATCH BASIN W/ INLET FILTER
[Symbol]	[Symbol]	CURB INLET W/ SILT SAC
[Symbol]	[Symbol]	END SECTION W/ RIP RAP
[Symbol]	[Symbol]	GATE VALVE
[Symbol]	[Symbol]	HYDRANT
[Symbol]	[Symbol]	FLOOD PLAIN
[Symbol]	[Symbol]	CONTOURS
[Symbol]	[Symbol]	SPOT ELEVATION

**WOODSIDE BIBLE CHURCH  
ROMEO CAMPUS  
SECTION 4, TOWN 4 NORTH, RANGE 12 EAST  
WASHINGTON TWP., MACOMB COUNTY, MICHIGAN**

REVISONS		UTILITY WARNING
NO.	DATE	UNDERGROUND UTILITY LOCATIONS AS SHOWN ON THE PLAN, WERE OBTAINED FROM UTILITY OWNER AND NOT FIELD LOCATED.
1.	RELEASED FOR PERMIT	2-13-19
2.	REV. PER. MCHD	03-11-19
3.	REVISED PER TWP. ENG.	5-15-19
4.	REVISED PER TWP. ENG.	7-30-19
5.	ISSUED FOR PERMIT	8-2-19
6.	REVISE PER OWNER	08-29-19
7.	ADD PARKING	01-13-2020
8.	ADD STORM WATER DRIVEWAY & BERM	2-3-2020

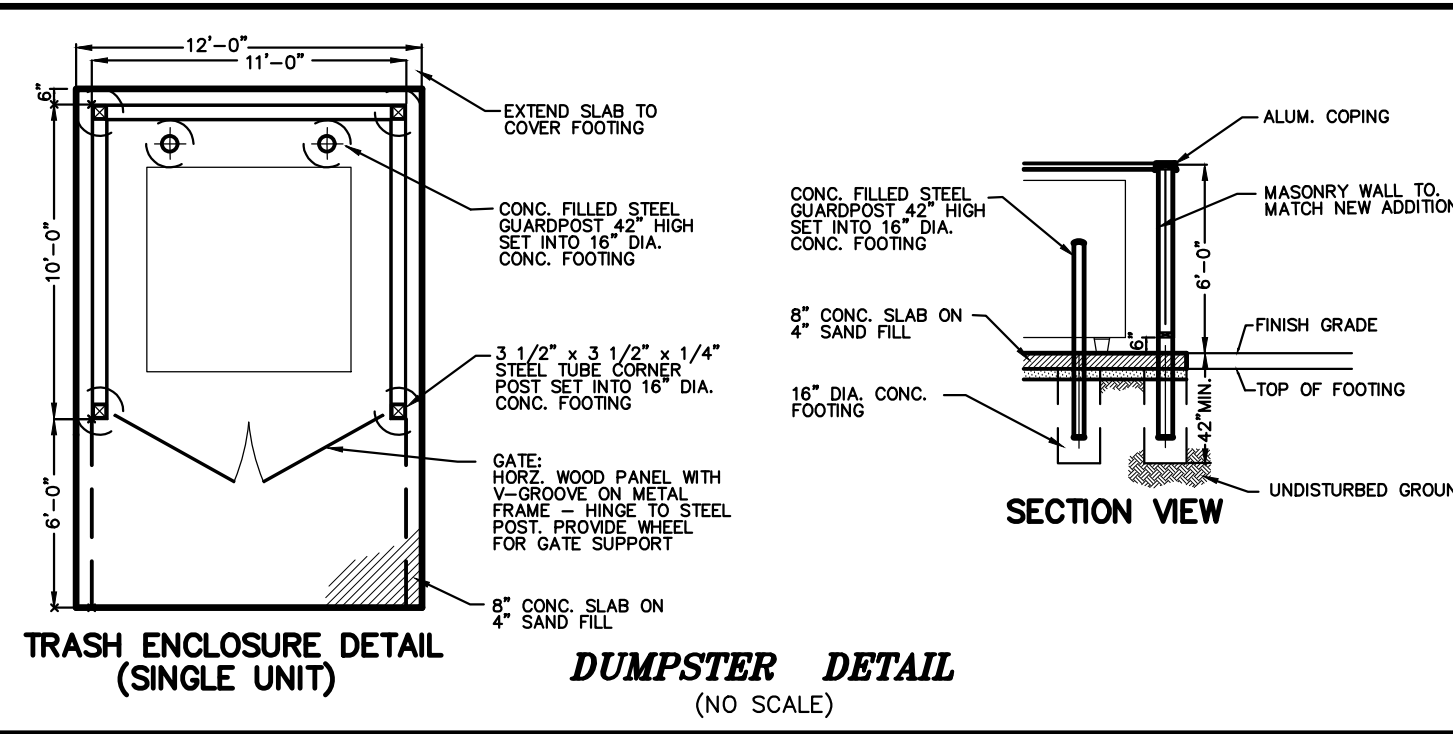
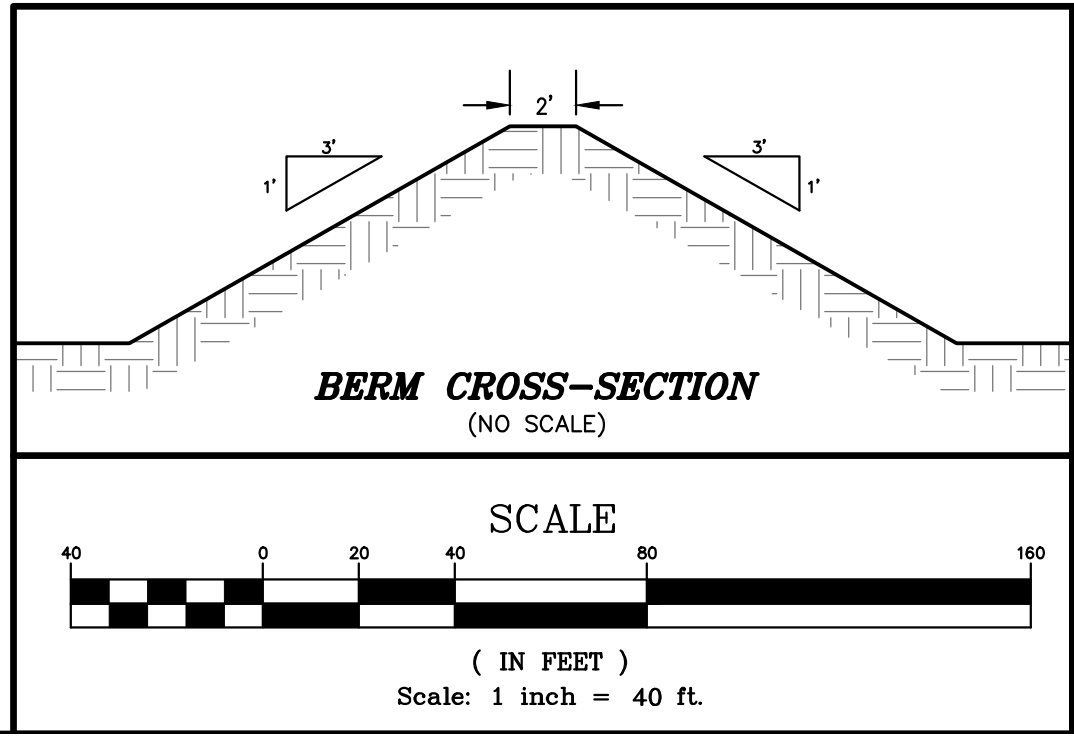
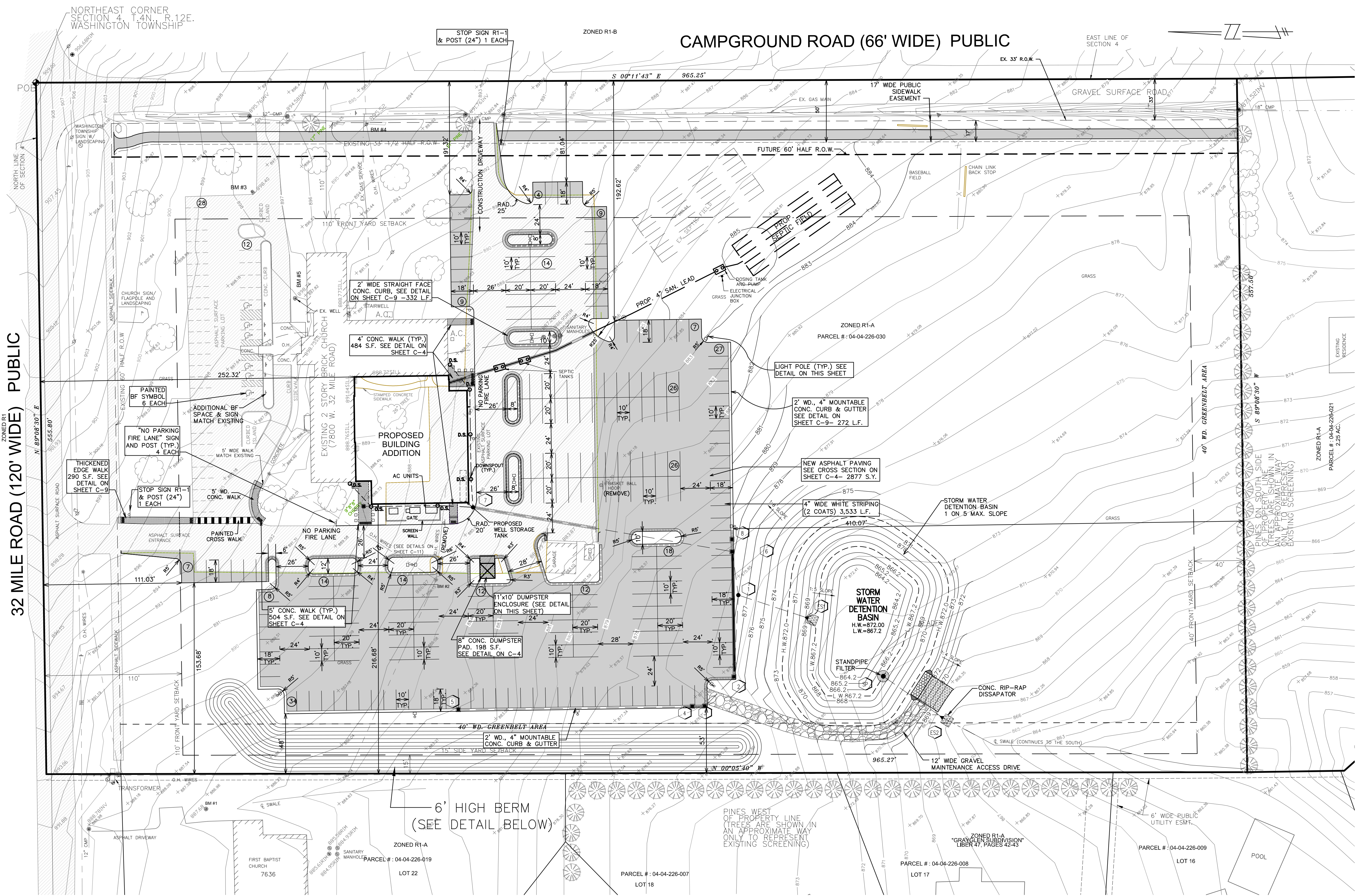
DATE: 08-28-19 DESIGNED BY: A.A. JOB NUMBER: 18-014  
CHECKED BY: C.S. DRAWING FILE: 180140A.dwg

**SITE PLAN**

**SEIBER, KEAST ENGINEERING, L.L.C.**  
CONSULTING ENGINEERS  
100 MAINCENTRE SUITE 10 • NORTHVILLE, MI • 48167  
PHONE: 248.308.3331 EMAIL: info@seiberkeast.com

**SHEET C-2A**

**CAMPGROUND ROAD (66' WIDE) PUBLIC**



NO ON-SITE EASEMENTS EXIST.

FIRE SUPPRESSION STORAGE TANKS SHALL BE LOCATED WITHIN THE PROPOSED BUILDING.

NO WETLANDS OR FLOODPLAIN EXIST ON THE SITE.

AREA OF PROP. BUILDING = 19,781 S.F.

**PARKING CALCULATIONS**  
PARKING REQUIRED:  
550 SEATS / 3 = 184 SPACES  
PARKING PROVIDED = 281 SPACES