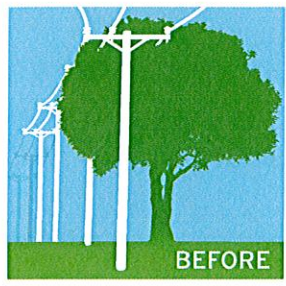




## TREE TRIMMING

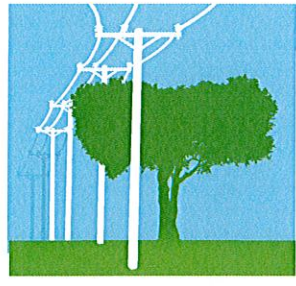
The trimming work will be done by a professional tree-trimming company. The crews will remove all branches, limbs and other debris created by this work unless you indicate that you would like it to remain on your property.



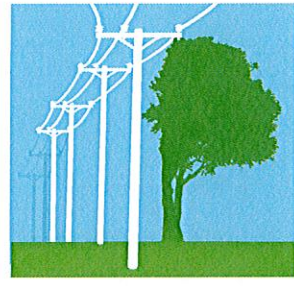
Our field crews have been trained on safe, proper and environmentally responsible tree care practices. They follow utility industry best practices.

### EXAMPLES OF PROPER PRUNING FOR SAFER, STRONGER TREES:

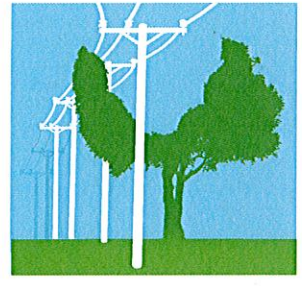
**Top Trim:**



**Side Trim:**

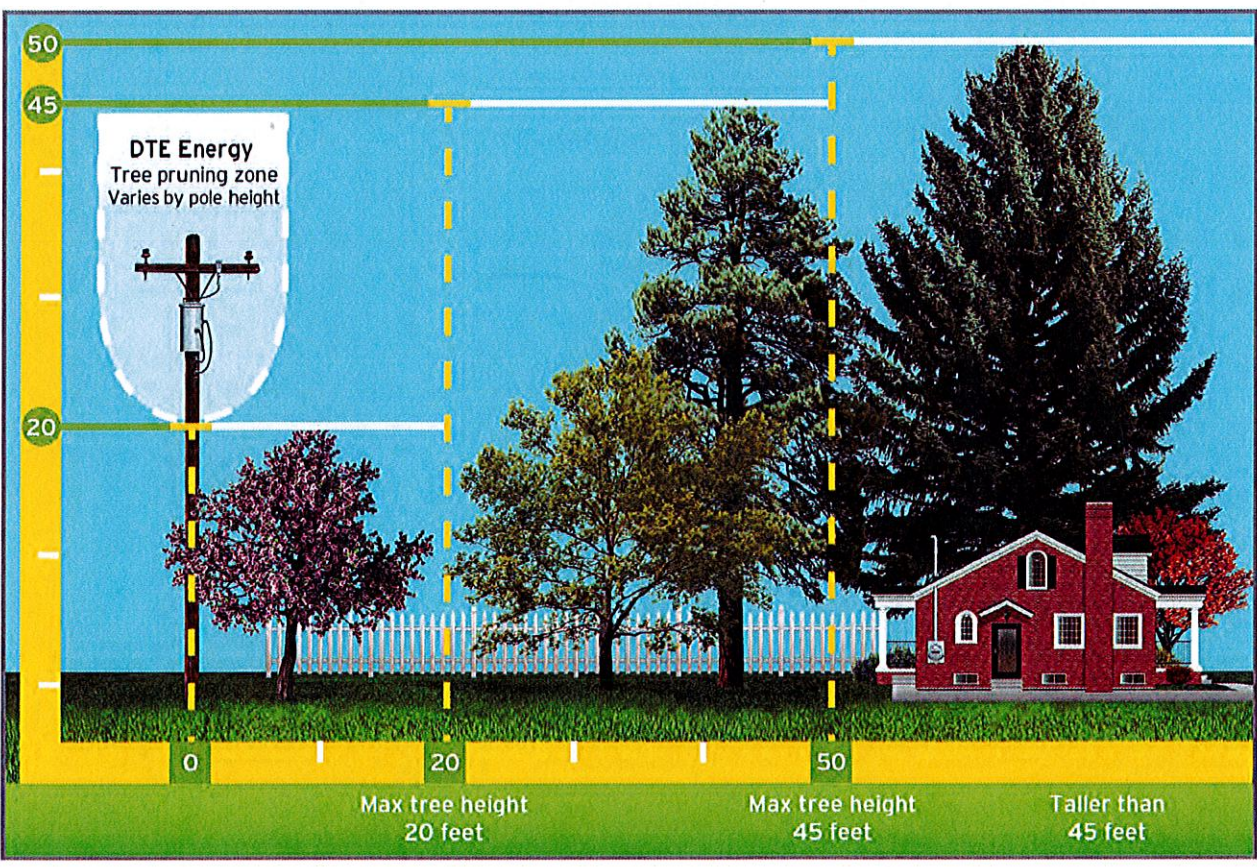


**V Trim:**



Thank you in advance for your support.

## PLANT THE RIGHT TREE IN THE RIGHT PLACE



Ideally, no trees should be planted near power lines. However, there are several species of trees that, under normal conditions, will not grow tall enough to interfere with power lines. By planting only low-growing trees near power lines, you can have both beautiful trees and reliable electricity for years to come.

This chart shows the proper planting distances.

